



INTRODUCTION:

You've purchased the perfect gift. Now you need the perfect wrapping. No better place to start looking than your own craft stash. Use these gorgeous supplies to perfectly showcase that gift. You may even consider making a coordinated card to go with it.

SUPPLIES:

Paper (including cutting dimensions)

- Box Base – 12" x 12" Basic Black Cardstock (124267) – cut to 27cm x 27cm
- Box Lid – Merry Little Christmas Designer Series Paper (144621) – cut to 15.2cm x 15.2cm
- Die Cut Trees – Whisper White Cardstock (106549) - 9cm x 6.5cm
- Die Cut Deer – Basic Black Cardstock (124267) - 3cm x 3cm

Tools

- Card Front Builder Thinlits Dies (144674)
- Big Shot Die-Cutting Machine (143263)

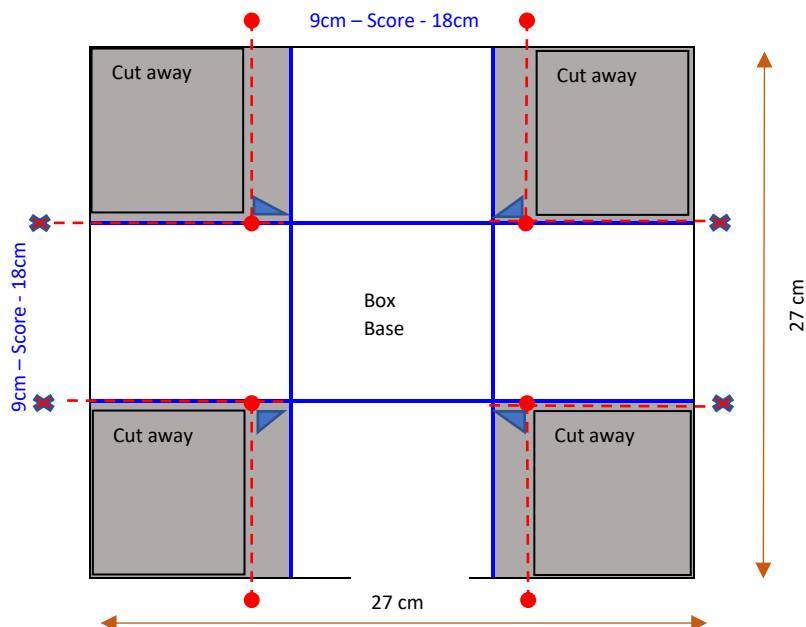
Accessories

- Mini Ornaments (144626) -1
- 7/8" (2.2cm) Striped Ribbon (144624) – approx 1 metre
- Green Sprigs (144627) - 2
- Linen Thread (104199)

INSTRUCTIONS:

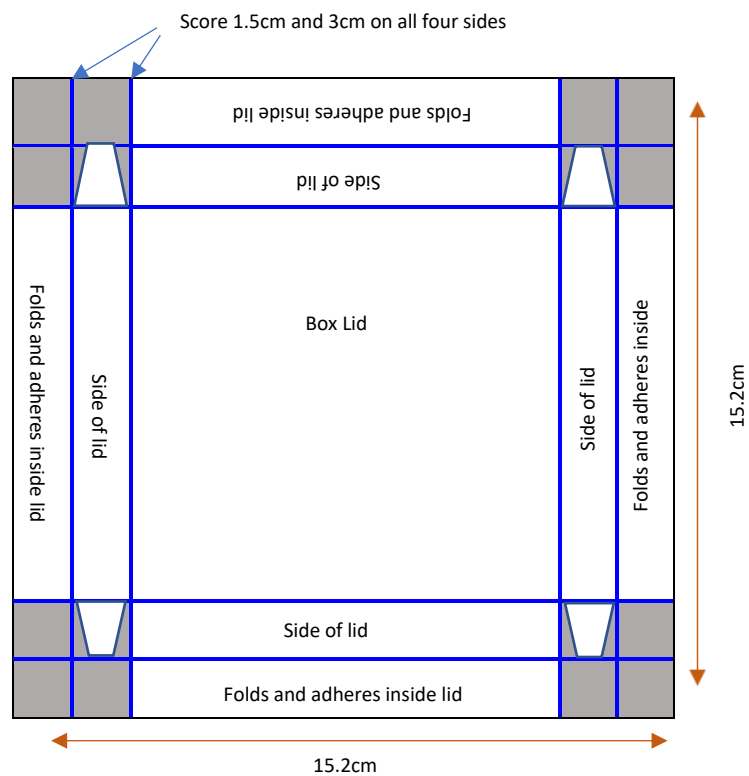
Box Base

1. Box Base. Score cardstock as illustrated by blue lines at 9cm and 18cm - Turn 45° and repeat.
2. To make the flaps, measure 1cm inside/outside the score lines, as illustrated by red dots.
3. Cut down this measured area to meet the next score line.
4. Now cut cardstock as illustrated by red dashed lines and X to remove the other corners and create the flaps. Mitre as illustrated by the blue triangles.
5. Crease all folds well using a bone folder.
6. Apply Fast Fuse Adhesive to flaps.
7. Assemble box by aligning the flaps to the edge of the adjoining side and sticking together.



Box Lid.

1. Score DSP all 4 sides at 1.5cm and 3cm as illustrated by blue lines.
2. Cut away as illustrated by the grey areas, ensuring to leave mitred flaps.
3. Crease folds well, using a bone folder.
4. Fold and adhere as illustrated using Fast Fuse Adhesive.



Box Decoration.

1. Die cut 1 set of double trees and 1 single tree from Whisper White cardstock.
2. Die cut 1 deer from Basic Black cardstock.
3. Adhere to box base using Multipurpose Liquid Glue.
4. Measure length of ribbon to tie around box with a shaped bow on top.
5. Use Linen Thread to tie the Mini Ornament to the bow.
6. Use Glue Dots to adhere two Green Sprigs to box lid.